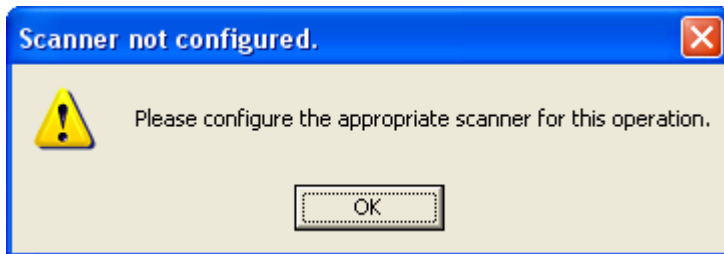


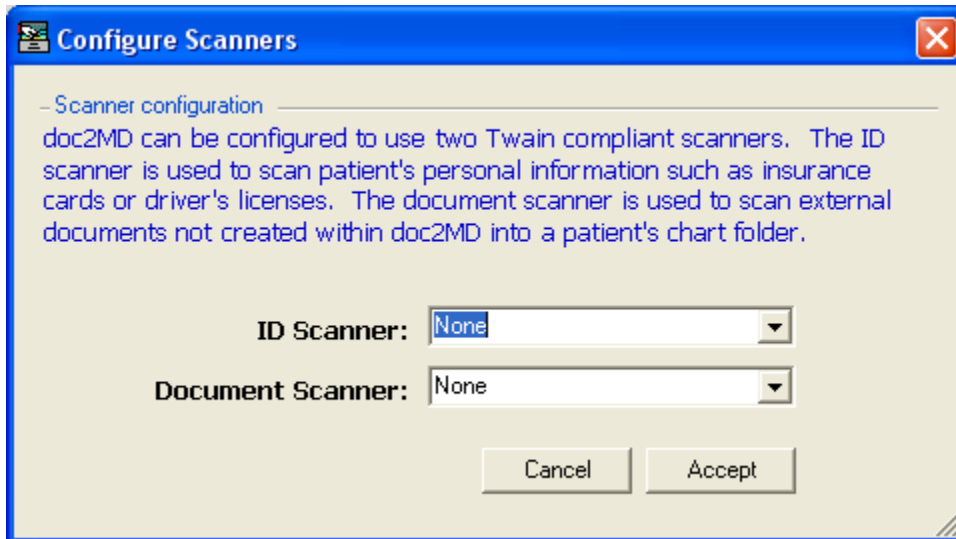
Quick Sheet: Configuring Document and ID Scanners

Overview: This Quick Sheet describes the steps necessary to setup doc2MD to use multiple scanners (ID and Document) on the same workstation.

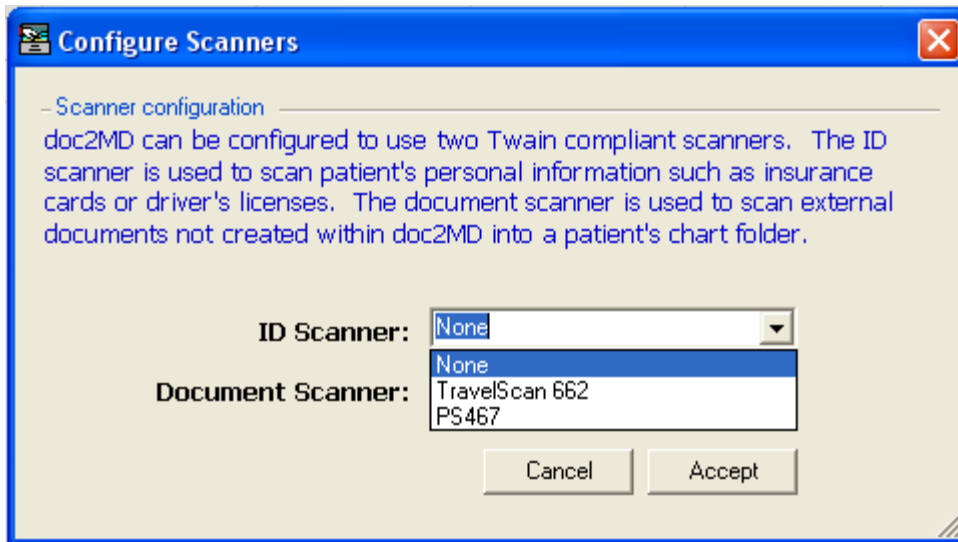
From the Active Encounter list, select the scan button. If this is the first time to setup the scanners, you will be notified that configuration is required.



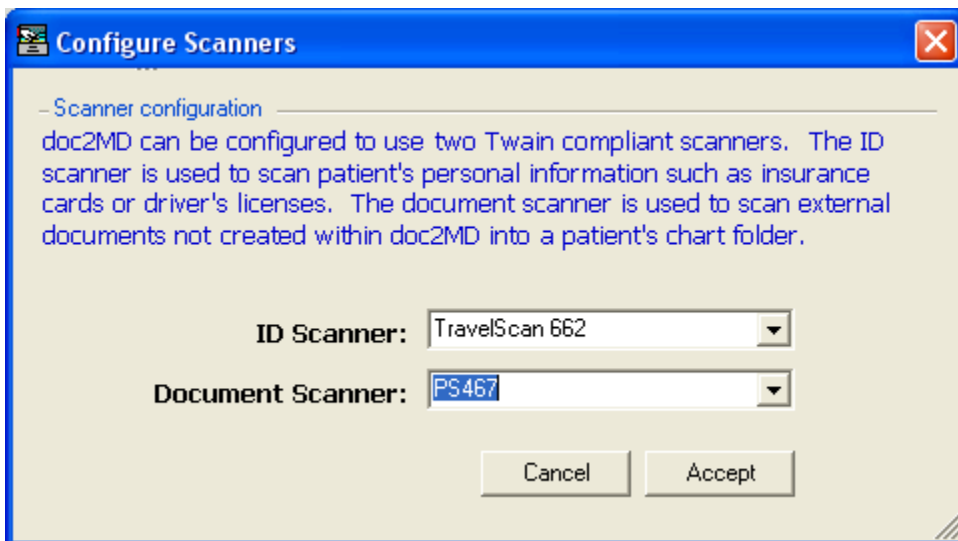
Press Ok to continue to the configuration dialog.



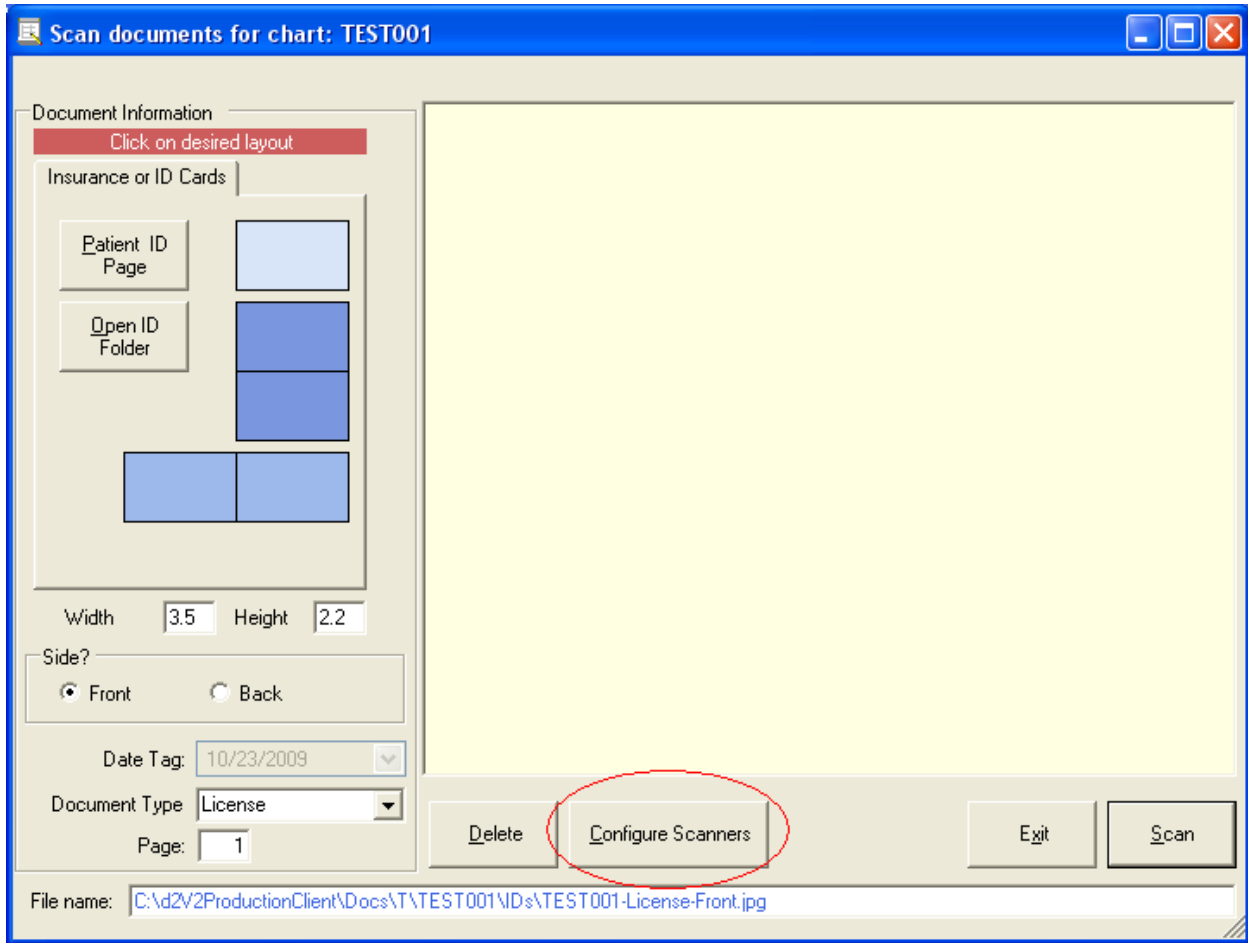
The doc2MD application will load all of the Twain compliant scanner names installed on the computer into the drop down options for the ID Scanner and the Document Scanner.



Select the scanner appropriate for each operation. If the scanner should not be used for the operation, just select 'None'. IN the above example, the TravelScan is the ID scanner and the PS467 is the document scanner.



Press Accept to save the settings and continue to the Document Scanning dialog.



If you wish to change the scanner assignments later, press the Configure Scanners button.