



# Quick Sheet: Connect to the Medisoft® Database

Overview: This document describes the steps necessary to connect doc2MD to the Medisoft® Network professional database. The purpose of this connection is to automatically import the patient demographics from Medisoft® into doc2MD.

Background: Medisoft® uses a database called Advantage Database Server ([www.sybase/support/aboutsupport/advantage](http://www.sybase/support/aboutsupport/advantage)) to store information. In order for doc2MD to connect to the database, doc2MD will need to be configured to know how to connect to the medisoft database. This Quick Sheet will walk you through the steps necessary to connect successfully.

You may need the Medisoft® installation CD in order to complete this configuration option.

Enter the **UserID** and  
**Password for doc2MD**  
here:

\_\_\_\_\_  
\_\_\_\_\_

**Step 1:** Configure Medisoft® to have a UserID and Password that doc2MD may use to connect to the database:

The doc2MD software will connect to the Medisoft® database via a unique UserID and Password setup within the Medisoft® Network Professional application. If you configure doc2MD to use an existing UserID that is used already by another user, Medisoft® will fail with a notice that the user is already logged on. To add a new UserID to Medisoft®, refer to Medisoft®'s user guide.

**Step 2:** Install the Advantage database drivers on the workstation(s) that will be used to interface with Medisoft®. Note, this workstation must have the following installed and configured for the Bridge to work properly:

- Internet Information Services (IIS)
- Dotnet Framework 2.X

Document where Medisoft  
stores your practice  
database files:

\_\_\_\_\_  
\_\_\_\_\_

The drivers are available for download from doc2MD's web site or from your Medisoft® installation CD. To access them from doc2MD's site, please go to the following page:

<http://www.doc2md.com/Support/Downloads/tabid/92/Default.aspx>

While installing, document where Medisoft® stores your practice database files. Typically, they are installed in a format such as:

[\\Server\Medidata\PracticeName](#)

Document which  
computer and IIS port is  
used:  
\_\_\_\_\_  
\_\_\_\_\_

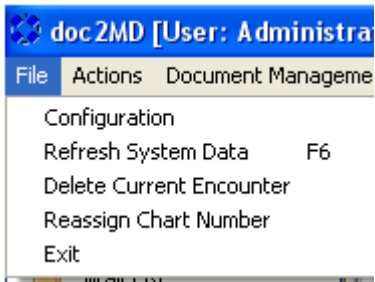
**Step 4: Configure IIS**

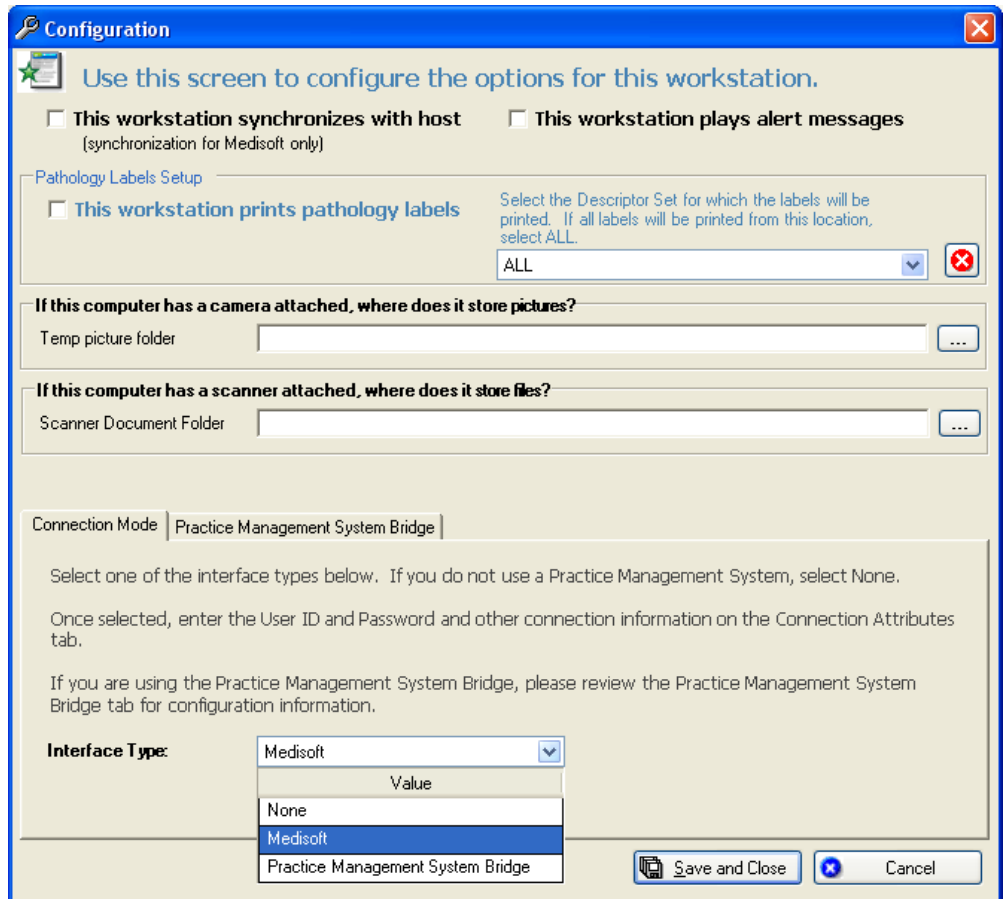
Have your network professional create a new web site (or use the default) for the doc2MD Medisoft® bridge. Note: The Medisoft® bridge is a web service that runs within IIS. Each workstation will be configured to connect to the PC using the port number configured within IIS for this web service.

Contact doc2MD Support to have the web service files installed on the workstation/server.

**Step 3: Configure doc2MD to use the Medisoft® Database**

From the doc2MD software, select File | Configuration from the main menu to be presented with the configuration dialog.





On the Connection Mode tab at the bottom of the dialog, select Medisoft® as the Practice Management Software and then select the Practice Management System Bridge tab to continue to the next configuration page.

**Configuration**

Use this screen to configure the options for this workstation.

**This workstation synchronizes with host** (synchronization for Medisoft only)       **This workstation plays alert messages**

**Pathology Labels Setup**

**This workstation prints pathology labels**      Select the Descriptor Set for which the labels will be printed. If all labels will be printed from this location, select ALL.

ALL

**If this computer has a camera attached, where does it store pictures?**

Temp picture folder

**If this computer has a scanner attached, where does it store files?**

Scanner Document Folder

Connection Mode: Practice Management System Bridge

Please provide the Practice Management System Bridge Server Name and listening port below:

Server name/IP Address: DRH-DB1

Port: 3005

Chart specific search only:

Save and Close      Cancel

On this tab, enter the Server Name and Port (identified in Step 4 of this Quick Sheet).

**Step 4:** Press Save and Close.

**Step 5:** Perform step 3 on each workstation.

**Doc2MD is now ready to work with the doc2MD Medisoft® Bridge**